








EMERALD

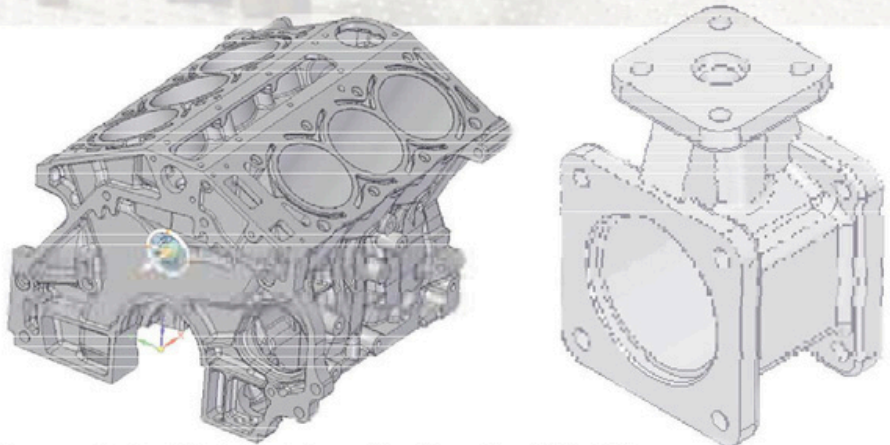


-  Moving Bridge Type Construction
-  High Precision Ruby Jet Air bearings on all three axis
-  Works with any combination of Renishaw probing system
-  Active Temperature compensation.
-  Granite bed with integrated Y axis.
-  I++ connectivity allows machine to work with any I++ software
-  High Precision Steel scale suspended at one end for thermal compensation

Accuracy Chart for Emerald Series

Probing System	Maximum Permissible Error
SP 25 M Stylus Dia 4 x 30 mm	$\pm 2.1 + L / 250 \mu\text{m}$
TP 200 Stylus Dia 4 x 10 mm	$\pm 2.2 + L / 250 \mu\text{m}$
TP 20 Stylus Dia 4 x 10 mm	$\pm 2.5 + L / 250 \mu\text{m}$

* Higher Accuracy Ranges are available on request
 ** Different Measuring Ranges are available on request



** Accuracy stated are at standard operating conditions Temperature : 20 Deg \pm 2 Deg

	Emerald 565	Emerald 785	Emerald 7106	Emerald 9158	Emerald 10209
Measuring Range X Axis	500 mm	700 mm	700 mm	900 mm	1000 mm
Measuring Range Y Axis	600 mm	800 mm	1000 mm	1500 mm	2000 mm
Measuring Range Z Axis	500 mm	500 mm	600 mm	800 mm	900 mm
Scale Resolution	0.1 μm as standard				
Machine Construction	Granite Base with Integrated Y Axis, Moving bridge Construction in Granite				
Max. Workpiece Weight	650 Kgs		900 Kgs		1000 Kgs
Probing Head	Renishaw : MH 20i / MH 8 / MIH / PH 10T / PH 10 M / PH 20 / SP 80 / SP 25				
Machine Dynamics	3D Vectorial Speed - 500 mm/sec + 3D Vectorial acceleration - 600 mm/sec ²				
Module Changing Rack	MCR 20 / TCR 20 / FCR 25 / MRS				
Software Options	Arco Graphics / Arco CAD				